

Installation instructions for neon lights

1.

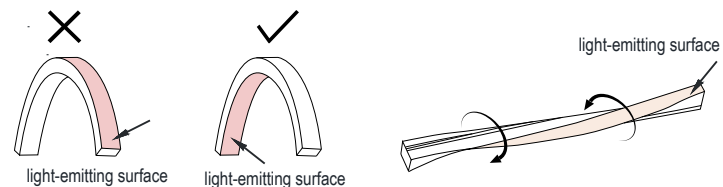
⚠ WARNING !

- The following safety precautions are intended to prevent any injury or damage to other things, and may cause damage if the product violates precautions during use.
- 1、 Installation and inspection of the product must be carried out by a professional with an electrician's certificate.
 - 2、 Please use DC24V power supply. Please insure right positive and negative connection. Do not use other power sources, such as AC220-240V.
 - 3、 All power cables should be with protection treatment. The power supply wiring should be insulated and waterproof.
 - 4、 The product should not be covered thermal insulation material or inflammables, which may cause the product to malfunction or catch fire.
 - 5、 The installation must be firm, without loosening, sagging, etc., and the product cannot be moved forcibly after installation.
 - 6、 For safety, do not look directly at the LED light source.
 - 7、 Do not use as task illumination when in building construction.
 - 8、 LED module can't be changed.

PRECAUTIONS

- Precautions for storage:
- 1、 storage temperature and humidity: 0°C-55°C 40-70%RH
 - 2、 Do not unwarp packaging during storage. Please place in the direction indicated by the carton. Do not stack heavy objects on the packing box.
 - 3、 Please do not store the product under the following conditions:
-High humidity -High temperature -confetti and dust -sunlight exposed
-Chemicals such as strong acids, strong bases, solvents, etc

- Precautions for installation and use:
- 1、 Install in strict accordance with the instructions.
 - 2、 temperature of product use: -10°C-+40°C. Do not use under the following conditions:
-High temperature -high humidity, -dust, -sun exposure,
strong acid and strong alkali solvents,
->2000 meters high altitude, -high air pressure,
-electromagnetic influence,
-places that may cause vibration or fall
 - 3、 Random cutting, breakage, forcibly pull, twist, press and tag on the product is prohibited.



2.

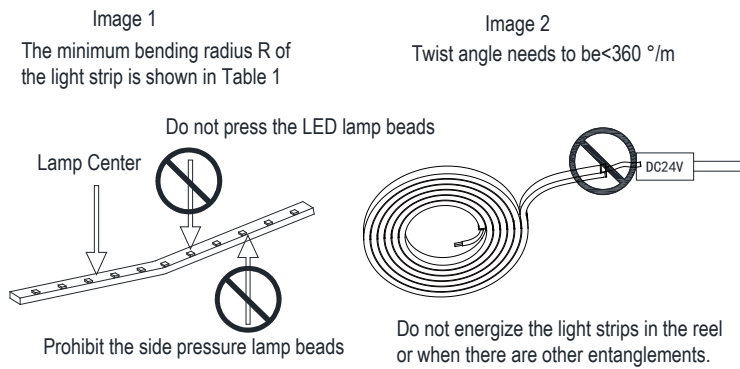
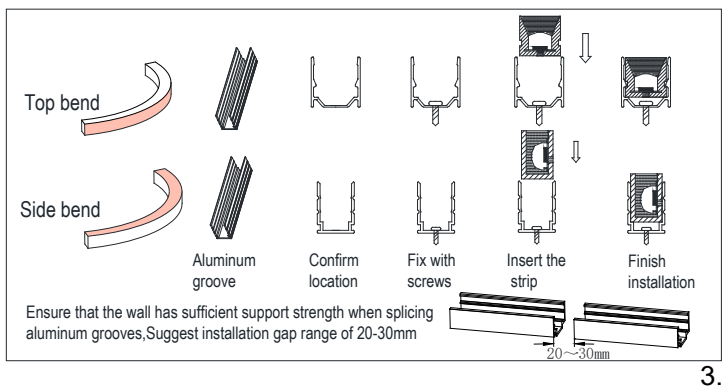


Image 3
List 1 of minimum bending radii for various specifications of light strips:

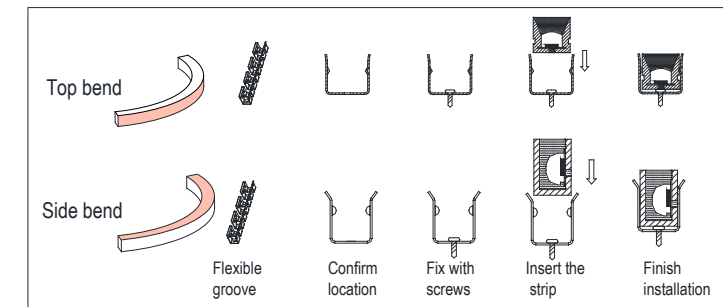
Specifications(mm)	8x12	12x16	10x20	10x10	15x15	15x18	16x19	20x20
Minimum bending radius(mm)	50	110	110	50	110	110	110	110

I Fixed Type

1. Fix with aluminum groove

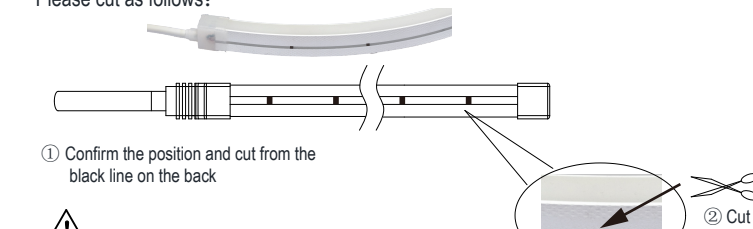


2. Fix with flexible groove

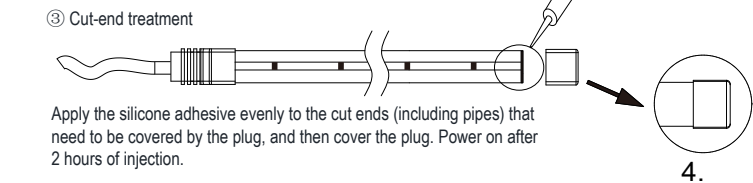


II Cut

Please cut as follows:

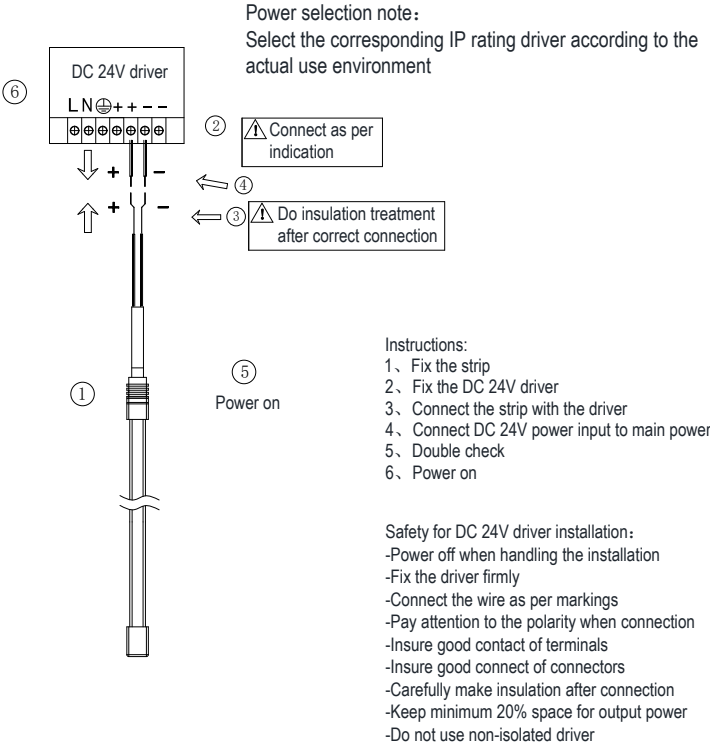


- ⚠ Attention, please:
After cutting, the cut position needs to be insulated and glued.
The protection level can only reach IP44.
After cutting the light strip, we need to use our matching plug for waterproof treatment and cutting. Improper rear waterproofing, company does not provide warranty.



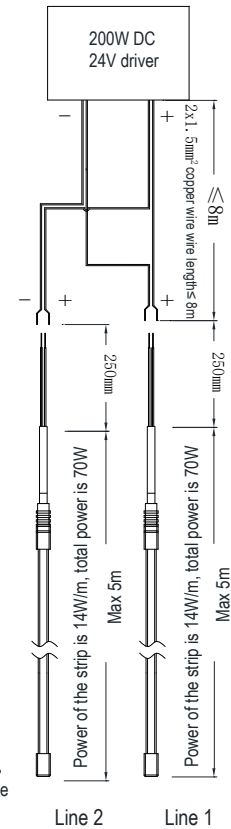
III Driver installation and wiring

DC 24V driver installation



5.

Connect more than 5m - Type A.

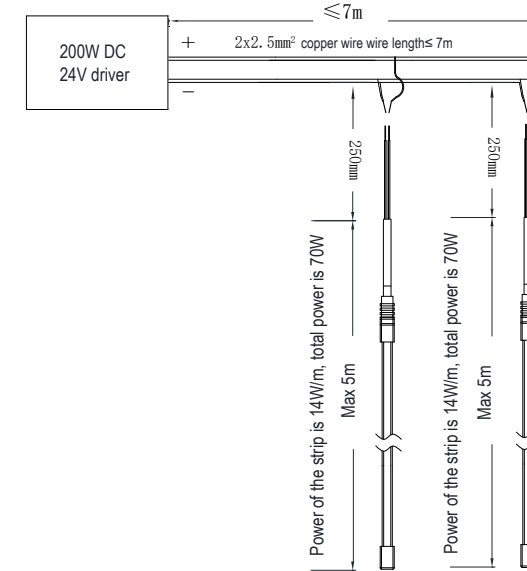


Note:

- 1、 It is suggested to keep minimum 20% space for output power. Driver in the figure is 200W and the power of strip is 14W/m, so the loadable length is 11m, and the actual length is rounded to 10m
- 2、 The max connection length is 5m
There are 10m in the figure. The strip over 5m should be led separately from the driver (led from the driver in two separate loop)

6.

Connect more than 5m - Type B



Note:

- 1、 It is suggested to keep minimum 20% space for output power. Driver in the figure is 200W and the power of strip is 14W/m, so the loadable length is 11m, and the actual length is rounded to 10m
- 2、 The max connection length is 5m
here are 10m in the figure, the one over 5m should be connected to the main line separately

7.

Maintenance

- to ensure the stable use of the product and prolong its service life, regular inspection and cleaning is needed
- Cleaning and inspection at least every 3 months with power off

Inspection Method

- Whether driver and chips work well
- Whether there is unusual smell, sound or heat.
- Whether there are breakage, or looseness, etc. If an abnormality is found, please immediately power off and stop using, and eliminate the abnormality in time.

Cleaning

- Gently wipe the product with a soft cloth.

8.