

**DIAMOND**

Diamond series installation instructions

1.

Fixed/ Adjustable Narrow Trim Downlight		Fixed/ Adjustable Trimless Downlight	
Series	Cut out	Series	Cut out
DR02301	Ø75mm	DR02303	Ø75mm
DR02302	Ø75mm	DR02304	Ø75mm
DR02305	Ø75mm	DR02307	Ø75mm
DR02306	Ø75mm	DR02308	Ø75mm
DR02309	Ø100mm	DR02311	Ø100mm
DR02310	Ø100mm	DR02312	Ø100mm
DR02313	Ø100mm	DR02315	Ø100mm
DR02314	Ø100mm	DR02316	Ø100mm
DR02317	Ø125mm	DR02319	Ø125mm
DR02318	Ø125mm	DR02320	Ø125mm
DR02321	Ø125mm	DR02323	Ø125mm
DR02322	Ø125mm	DR02324	Ø125mm

2.

### Installation I (whole fittings)

The specific appearance is subject to the real product !

**1.1** Check the cut out size of the product, cut a hole in the ceiling. (Applicable ceiling thickness 2-20mm)

**1.2** Connect with mains supply with power off. (Please choose a matched constant current driver for the luminaire firstly if driver excluded.)

**1.3** Tidy the wires and place the driver into the ceiling.

**1.4** Press clips to push the fitting into the ceiling, finished.

3.

### Installation II (separate installation)

**2.1** Check the cut out size of the product, cut a hole in the ceiling. (Applicable ceiling thickness 2-20mm)

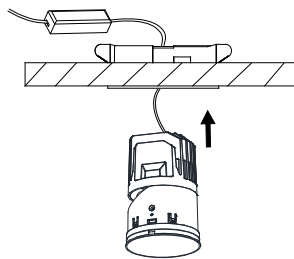
**2.2** Press spring clips and push the frame into the cut-out first.

**2.3** Get the reflector stuck in the ring

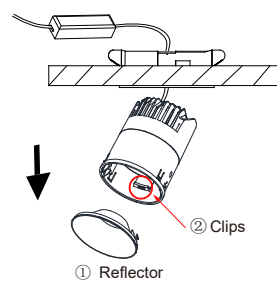
**2.4** Connect with mains supply with power off. (Please choose a matched constant current driver for the luminaire firstly if driver excluded.)

4.

**2.5** Place the driver behind the ceiling, push the fitting to snap with the frame, finished.



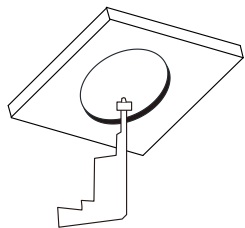
**Fitting Replacement:**  
Power Off: 1. Take off the reflector;  
2. Pull down the light fixture by engaging the clasp



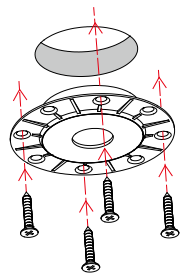
### Installation III ( trimless downlight)

Embedded accessory need to install before the ceiling is plastered.

**3.1** Check the cut out size of the product, cut a hole in the ceiling.

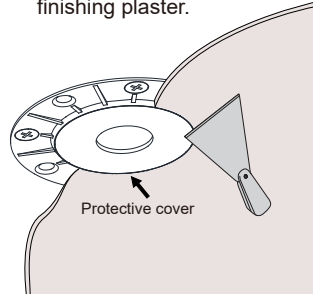


**3.2** Fasten the trimless adapter to ceiling by 4pcs screws.

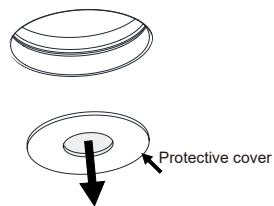


5.

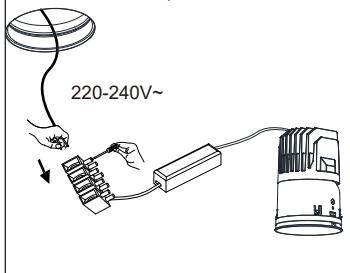
**3.3** Plaster the trimless adapter and the thickness is about 3mm. Don't Remove the cover before finishing plaster.



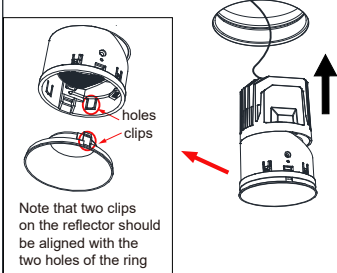
**3.4** After plaster, remove the cover and clean the surface



**3.5** Connect with mains supply with power off. (Please choose a matched constant current driver for the luminaire firstly if driver excluded.)



**3.6** Place the driver behind the ceiling, push the fitting to snap with the frame, finished.



Note that two clips on the reflector should be aligned with the two holes of the ring

6.



This product is only suitable for indoor, it is not allowed to be rinsed with water.

Independent external driver, recessed mounted.

Do not clean LED chip and reflector with hand or towel !



- Use only drivers that comply with IEC or CE safety standards.
- Check if the power supply match with the luminaire.
- Must consider the maximum current value displayed on the label of the luminaire.
- The voltage displayed on the luminaire is not used to select the constant voltage driver, but the voltage covered by the selected constant current driver.
- Take suitable ESD measures to avoid touching bare conductors.
- LED chips can be damaged if be in touch with chemical material or gas. Therefore, it is not allowed to clean the LED housing or luminaire by chemicals.
- The following items are confirmed to have negative impact on the performance of the luminaire, avoid to keep luminaire in the same circumstance with them.
  - Methyl acetate or ethyl acetate (i.e., nail polish remover)
  - Cyanoacrylates (i.e., "Superglue")
  - Glycol ethers (including Radio Shack ® Precision Electronics Cleaner - dipropylene glycol monomethyl ether)
  - Formaldehyde or butadiene (including Ashland PLIOBOND ® adhesive)
  - Dymax 984-LVUF conformal coating
  - Loctite Sumo Glue、Loctite 384 adhesive、Loctite 7387 activator
  - Gorilla Glue、Bleach, Bleach-containing cleaners, sprays

- Remove the insulation material from the luminaire or provide enough space so that the temperature raising will not overpass the limited TC.
- LED chip is very sensitive to switching transients, therefore, LED lamps and appliances must be connected after power cut off, no hotswappable.
- Recommends using the driver indicated on the luminaire manual.
- Must consider the polarity of the product.
- It is recommended to use an ambient temperature of -10 ° C to 40 ° C for indoor lighting equipment
- If the external flexible cable or cord of this lamp is damaged, the cord should be replaced by the manufacturer or its service agent or a similarly qualified person
- The light source in this lamp should be replaced by the manufacturer or its service agent or a similarly qualified person

7.

8.